



Signal and Power Quick Disconnect Plastic Connectors

General characteristics

- Alignment and keying provided by housing
- Color coding available
- Easy quick connect and disconnect
- Each connector half accept pins or sockets
- >10 000 mating and unmating cycles.

DA- DB Peculiarities

- Quick disconnect push-pull button release
- DA 3, 4, 9 ways - DB 3, 7, 9, 12, 25 ways.
- Up to 135°C (sterilization temperature compatible)
- Solder cup, crimp & pc tails removable contacts
- Variable cable clamp

DC Peculiarities

- 1/4 turn lock system
- 3, 4, 6 ways
- None removable solder cup & removable crimp contacts
- Cable clamp 6 to 12mm
- Arrangement 3 ways up to 500 V (pre-matted contact)

Technical Characteristics

DA-DB

DC

MECHANICAL		MECHANICAL	
SHELL		SHELL	
Material	Standard application High temperature application	Polycarbonate UL V0 Polysulfone	Polycarbonate UL V0
INSERT		INSERT	
Insulator	Standard application High temperature application	Polycarbonate UL V0 Polysulfone	Diallyl-phthalate
Contacts		Brass	Brass
Plating		Au/Ni	Au/Ni
MATING CYCLES		MATING CYCLES	
Quantity		>10.000	>10.000
INSERTION AND EXTRACTION FORCE BY CONTACT		INSERTION AND EXTRACTION FORCE BY CONTACT	
		Ø 0.47: 0.42N Max	Ø 1.50: 1.40N Max
		Ø 0.60: 0.70N Max	Ø 2.00: 2.00N Max
		Ø 1.50: 1.40N Max	
ELECTRICAL		ELECTRICAL	
INSULATION RESISTANCE	>10 ³ MΩ (under 500 VDC)	INSULATION RESISTANCE	>10 ⁵ MΩ (under 500 VDC)
ENVIRONMENTAL		ENVIRONMENTAL	
ENVIRONMENTAL CATEGORY	Standard: -25° +85° High temperature -25° +135°	21 days NFC 20-700	21 days NFC 20-700
ENVIRONMENTAL LEVEL	IP 40 NFC 20-010	ENVIRONMENTAL LEVEL	IP 30 NFC 20-010

Ordering Information

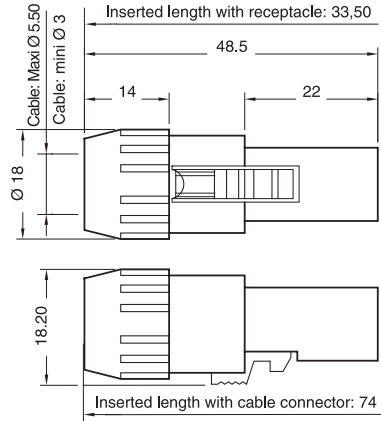
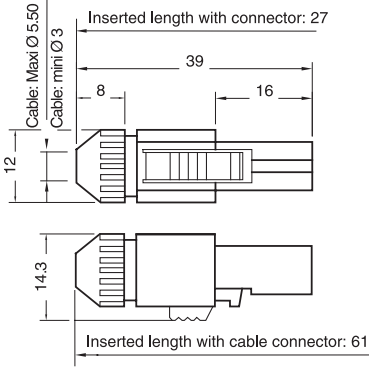
	D	A	-	306	13	40	- -	-	
SERIES									
MODEL									
A B C									
STANDARD									
NUMBER OF CONTACTS									
DA	3	0	6	3 contacts Ø 0.6 mm	DC	0	3	2	3 contacts Ø 2 mm
	4	0	6	4 contacts Ø 0.6 mm		4	1	5	4 contacts Ø 1.5 mm
	9	0	4	9 contacts Ø 0.47 mm		6	1	2	6 contacts Ø 1.2 mm
DB	3	1	5	3 contacts Ø 1.5 mm					
	7	0	6	7 contacts Ø 0.6 mm					
	9	0	6	9 contacts Ø 0.6 mm					
	1	2	5	12 contacts Ø 0.47 mm					
	2	5	4	25 contacts Ø 0.47 mm					
PART - POLARITY - PLATING									
13	Male plug			12	Female plug,				
23	Male receptacle			22	Female receptacle				
33	Male extension			32	Female extension				
TERMINATIONS									
20	To crimp								
40	Solder cup								
SHELL COLOR CODING									
N	Black (standard color)			O	Orange				
J	Yellow			V	Green				
W	White			B	Blue				
R	Red				Cream white (sterilization temperature compatible)				

Dimensions

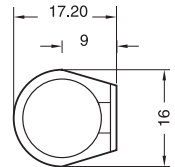
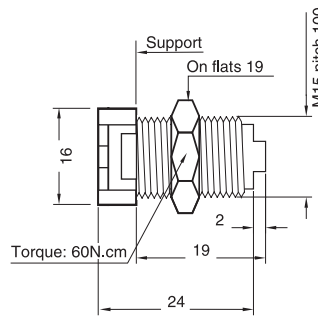
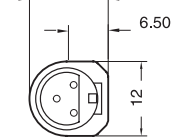
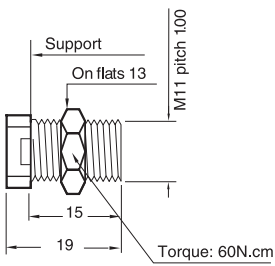
DA

DB

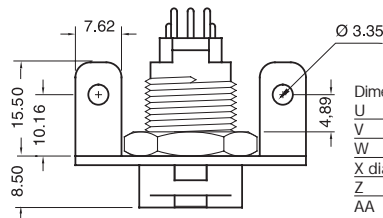
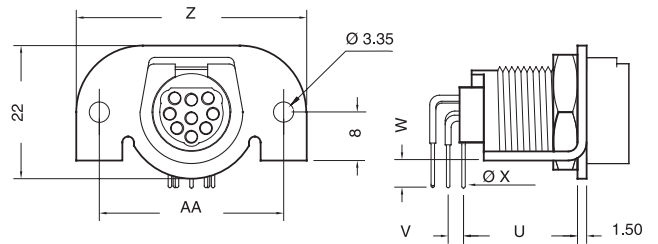
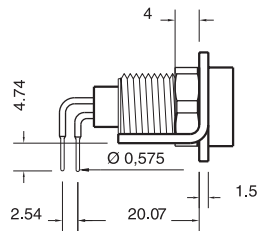
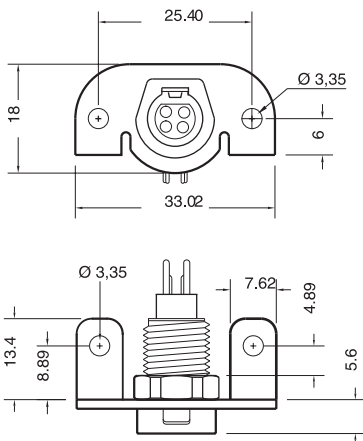
Female or male plug



Female or male receptacle

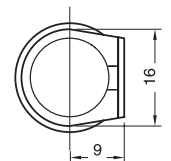
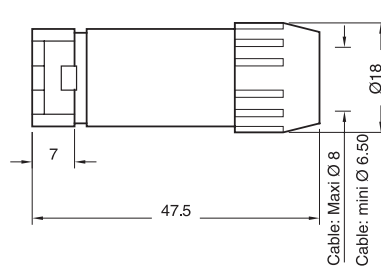
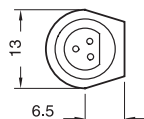
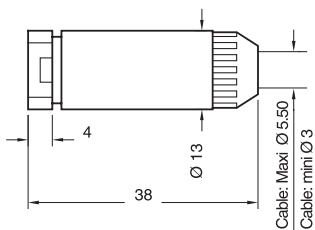


Female receptacle Right angle



Dimensions	3 ways	7&9 ways
U	21,19	18,35
V	3,81	2,54
W	4,68	4,50
X dia	1,50	0,60
Z	33,02	38,10
AA	38,10	38,40

Female or male extension



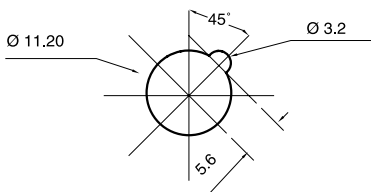
Dimensions are in mm

Arrangements overview

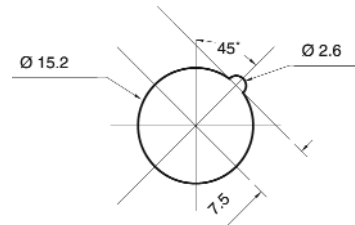
Arrangements		Tools								
Reference	Receptacle seen from cabling side	Contact resistance in mΩ	Current rating (A)		Current for all contacts (A)		Break down voltage (V)	Crimping HYPERTAC contacts		Removal
			Service	Peak	Service	Peak		Crimp tool	Locator	
DA . 306 3 Contacts Ø 0,60		6	7	12	5	9	1800	M22 520 /2.01	SS.006 00 00 001	SD.006 00 00 004
DA . 406 4 Contacts Ø 0,60		6	7	12	5	9	1400	M22 520 /2.01	SS.006 00 00 001	SD.006 00 00 004
DA . 904 9 Contacts Ø 0,40		8	2	4	1	2	750	M22 520 /2.01	SS.004 000 1914	SD.004 000 1916
DB . 315 3 Contacts Ø 1,50		2,5	12	21	6,5	15	1800	M22 520 /2.01	SS.015 00 00 002	SD.015 00 00 005
DB . 706 7 Contacts Ø 0,60		6	7	12	3	6,5	1800	M22 520 /2.01	SS.006 00 00 028	SD.006 00 00 004
DB . 906 9 Contacts Ø 0,60		6	7	12	3	6,5	1500	M22 520 /2.01	SS.006 00 00 028	SD.006 00 00 004
DB . 125 12 Contacts Ø 0,47		12	3	7	1,5	3	1000	M22 520 /2.01	SS.047 00 00 001	S____043
DB . 254 25 Contacts Ø 0,40		8	2	4	1	2	750	M22 520 /2.01	SS.004 000 1914	SD.004 000 1916

Preparation board details

DA



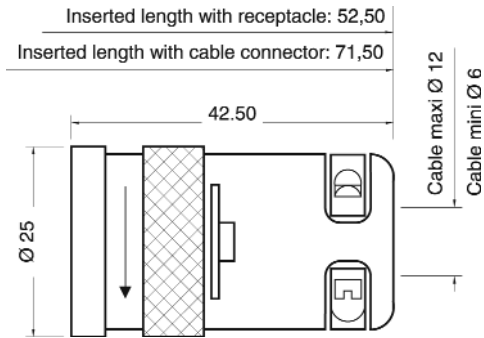
DB



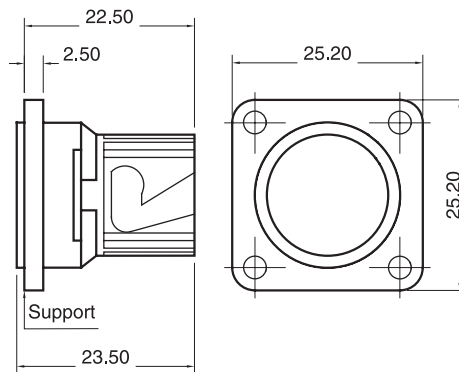
Dimensions

DC

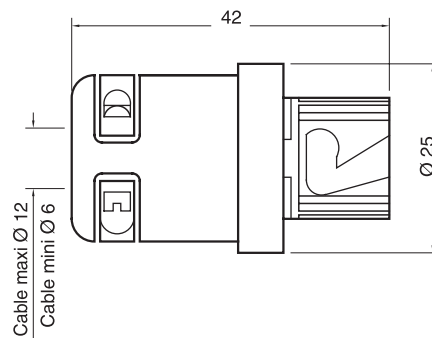
Female or male plug



Female or male receptacle



Female or male extension



Dimensions are in mm

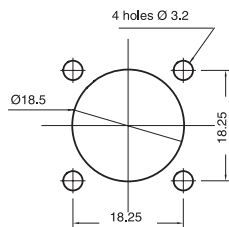
Arrangements overview

Arrangements

Tools

Reference	Male receptacle seen from cabling side	Contact resistance in mΩ		Current rating (A)		Current for all contacts (A)		Break down voltage (V)		Female receptacle seen from cabling side	Crimping HYPERTAC Contacts	Removal
		Service	Peak	Service	Peak	Service	Peak	Contact to contact	Contact to mass			
D C . 032 3 Contacts Ø 2		1,2	18	26	12	20	2800	3800			no	no
D C . 415 4 Contacts Ø 1,50		2,5	14	22	9	14	2000	3700			no	no
D C . 612 6 Contacts Ø 1,20		3	12	18	7	12	2000	3500			no	no
D C . 146 14 Con- tacts Ø 0,60		consult us									Locator	
											SS.006 00 00 028	SD.006 00 00 006

Preparation board details



Accessories



Connectors supplied with 4 half clamping ring for cable from 6 to 12 mm.

Cap for receptacle: P.N.: GPN 200L16x8
Supplier: "POPPELMANN" France